

## NOW ACCEPTING APPLICATIONS FOR PSYCHOLOGY POSTDOCTORAL FELLOWSHIP

Year-long training program based at The Ross Center in VA/DC with outstanding opportunities for training, learning, growth, and development. Fosters clinical excellence and readiness for independent practice.

### Who Are We?

- A multi-state private practice with an established **legacy of excellence** in integrated clinical care and training
- Award-winning leaders and experts in the fields of psychology and psychiatry
- Comprehensive training program without compromise – Curriculum based on licensure standards and core competencies, yet **flexible, inclusive, and tailored to your interests**
- Where professionalism meets personability
- Evidenced-based and effective – **specializing in CBT/ERP, ACT, DBT** to treat anxiety and OCD, depression and mood disorders, ADHD, ASD, trauma and PTSD, life transitions, and more

### ADULT FOCUS AREA

#### Psychotherapy

- Individual with adults of all ages, option for +/- child/adolescent cases
- Group (e.g., *Adult Social Anxiety, Adult DBT Skills*)
- Comprehensive DBT Program (*ages 14-17*)
- Accelerated Treatment Program

#### Psychological Evaluation + Testing

- Neuropsychological & Psychoeducational, Adult ADHD, Personality/Emotional, Forensic

#### Supervision and Consultation

#### Professional Development + Research

- Free CEs
- Didactics
- Professional Memberships
- Case Presentations
- Capstone Project

### The Ross Center Difference

#### What sets us apart and what you'll take away:

- World class supervisors and colleagues
- Meaningful professional relationships and networks
- Clinical expertise in areas of specialty interest
- Encouragement and support to pursue passions and professional pathways of interest
- Lived experience working within the dynamic environment of private practice
- Support throughout the licensure process
- Pipeline to ongoing work in private practice at the Ross Center (DC, VA, or NY)
- Administrative support so you can focus on what matters most to you

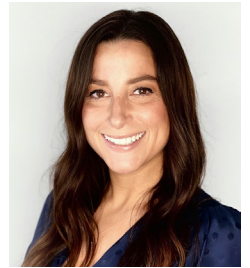
## We are Looking for Candidates Who:

Have completed an APA-accredited doctoral program and pre-doctoral internship with an emphasis on prior training in either child/adolescent or adult psychology. Special consideration for individuals who are:

- Looking to plant roots and grow with us – open to working toward licensure in DC, Virginia, and preferably, Maryland
- Passionate, enthusiastic learners interested in exploring a career in private practice
- Compassionate and committed to providing comprehensive clinical services, with focus on individual and group therapy
- Collaborative, critical-thinking team members who appreciate the value of integrated care

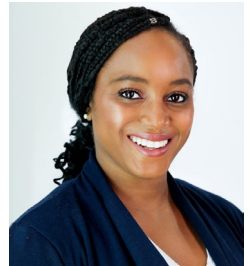
“ Our fellowship program is where training truly meets real-world practice. We offer the flexibility and autonomy of private practice with the support, structure, and depth of training that is desirable at this pivotal point in your career. ”

~ [Andrea Biel, PsyD, Director of Psychology Postdoctoral Fellowship Program](#)



“ As a postdoctoral fellow at the Ross Center, I have learned how to effectively manage a caseload while receiving support from colleagues and supervisor as needed. As a recent graduate, it has been essential for my growth and confidence to practice independently in order to learn more about myself and my clinical judgement. Having a team that supports my interests as well as my well-being has been incredibly beneficial too. ”

~ [Tolu Ojoyeyi, PsyD, Current Postdoctoral Fellow](#)



## Application Deadline: Applications accepted on a rolling basis until position is filled.

The following materials must be included with submission of application: cover letter, curriculum vitae, three (3) Letters of Recommendation (one must be from internship supervisor), and a de-identified recent neuropsychological/psychological report. Please submit materials and direct any questions or concerns regarding the application and interview process to Dr. Andrea Biel ([abel@rosscenter.com](mailto:abel@rosscenter.com))